



Race-Keeper Dual Stream + HD Export User Guide v1.1
September 2010



*Trivinci delivers user guides
exclusively in soft format*



Table of Contents

Race-Keeper Dual Stream + HD Export..... 3

 What You Need..... 3

 Before You Begin 3

 When You’re Ready 4

 Race-Keeper Dual Stream + HD Export Software 4

 1. Update Your Race-Keeper System Software..... 4

 2. Purchase Race-Keeper Dual Stream + HD Export Software 4

 3. Open Race-Keeper Comparo and Activate Race-Keeper DS+HDE Software License 4

 4. Copy License File to Your Race-Keeper System 6

 5. Use Race-Keeper Comparo to Configure Your System to Capture Dual Stream 6

 6. Update Your Race-Keeper System Configuration 6

 Race-Keeper Comparo Dual Stream Playback 7

 Race-Keeper HD Export 8

 HD Export..... 8

 Advanced Export – Custom Backgrounds 9

 Trouble-shooting – Pixelation..... 9



Race-Keeper Dual Stream + HD Export

Race-Keeper Dual Stream + HD Export is a software add-on that i) enables your Race-Keeper on-board system to capture two full-stream videos simultaneously in one video file, and ii) expands Race-Keeper Comparo's export feature to export dual stream video, gauge overlays and optional user-defined custom graphics to a 1920x1080 HD palette for playback on an HD display.

What You Need

- Race-Keeper video data system
- Race-Keeper Comparo software (available to registered users for free at www.race-keeper.com)
- Race-Keeper Dual Stream + HD Export software add-on (available at www.race-keeper.com/store)

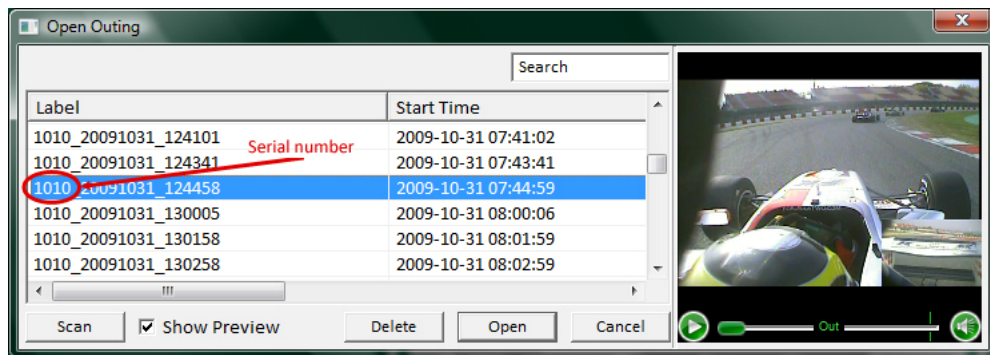
Before You Begin

Your Race-Keeper system serial number is required to activate your Race-Keeper iDash software license.

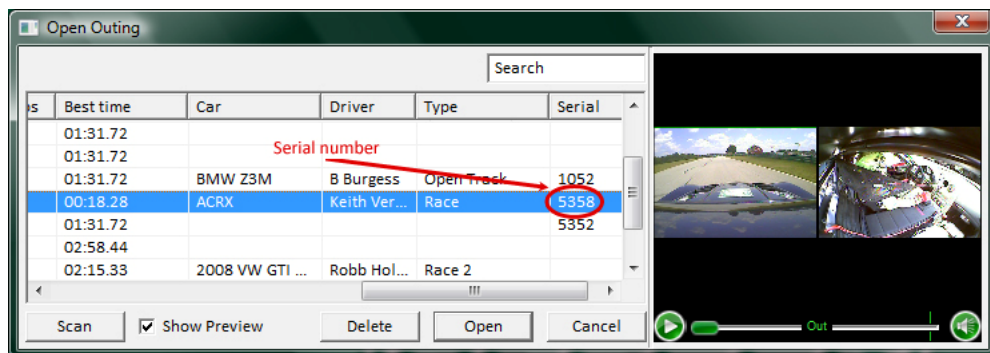
- Your serial number is four digits, starting with 1 (Race-Keeper SE) or 5 (Race-Keeper HE)
- Your serial number is located on your Race-Keeper video data system *and* on all track session folders

To quickly obtain your serial number, open Race-Keeper Comparo software and select File → Open Outing.

If you don't rename your track sessions before importing, your session names include your serial number.



You can also identify your serial number by scrolling to the right.





When You're Ready

Follow these **SIX STEPS** to purchase, activate and update your system for Race-Keeper DS+HDE.

1. Update Your Race-Keeper System Software (2.3.2 or later)
2. Purchase Race-Keeper Dual Stream + HD Export software
3. Open Race-Keeper Comparo and Activate Race-Keeper DS+ HDE Software License
4. Copy License File to Your Race-Keeper System
5. Use Race-Keeper Comparo to Configure Your System to Capture Dual Stream
6. Update Your Race-Keeper System Configuration

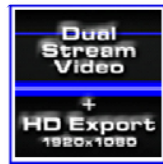
Race-Keeper Dual Stream + HD Export Software

1. Update Your Race-Keeper System Software

- *Note: This step is not required if you already are using v2.3.2 or later version(s)*
- Open Race-Keeper Comparo software and select Help → Check for Race-Keeper System Updates OR
 - Go to www.race-keeper.com/support/downloads to download current system software to SD or USB
- Power on your Race-Keeper video data system and wait until the system boots
- Insert the SD card or USB stick with the updated system software into the Race-Keeper system
 - Transfer LED will illuminate momentarily during software update
 - Depending on your software version, your Race-Keeper system may also reboot

2. Purchase Race-Keeper Dual Stream + HD Export Software

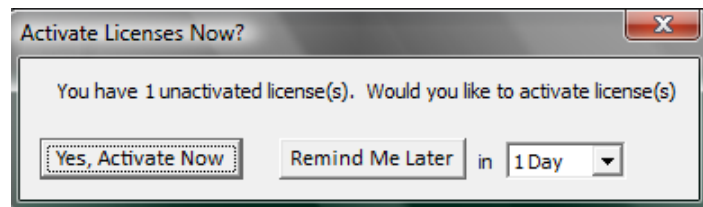
- Go to the Race-Keeper web site store
- Select and purchase Race-Keeper DS+HDE (in Race-Keeper Software Add-Ons)



- Upon purchase, software license will be available in Race-Keeper Comparo

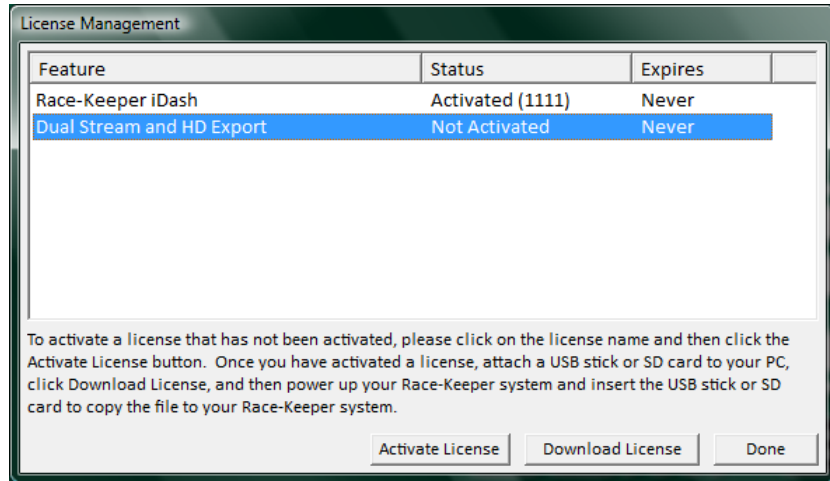
3. Open Race-Keeper Comparo and Activate Race-Keeper DS+HDE Software License

- Open Race-Keeper Comparo and follow instructions to activate your DS+HDE software license using your Race-Keeper serial number
 - *Note: If Race-Keeper Comparo doesn't display an alert about licensing when the application starts, select Configure → License Manager and enter your Race-Keeper.com username and password when prompted*
- When Race-Keeper displays the following prompt, Select "Yes, Activate Now"

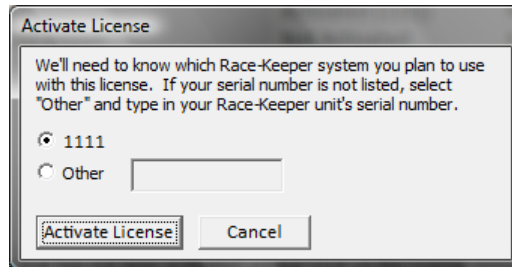




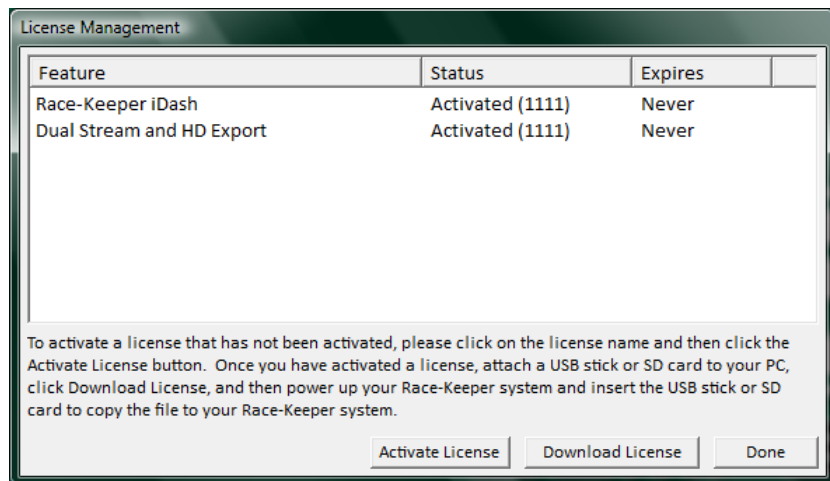
- When Race-Keeper displays the following prompt, click on the license name and then click on “Activate License”



- When Race-Keeper displays the following prompt, enter the serial number from your Race-Keeper video data system and then click on “Activate License”



- Note: The easiest method to determine your serial number is to navigate to one of your recorded track sessions; your serial number is always the first four digits of every folder name. The Race-Keeper serial number also is printed on the bottom on your Race-Keeper video data system.
- When Race-Keeper displays the following prompt, click on “Download License” to download the update file to an SD card or USB stick.



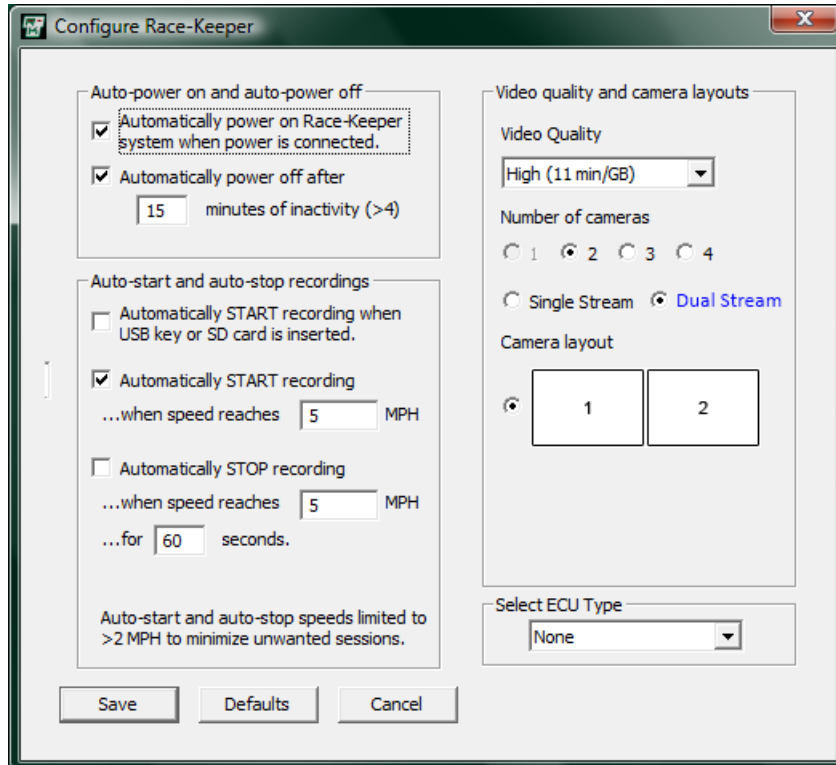


4. Copy License File to Your Race-Keeper System

- Power on your Race-Keeper video data system and wait until the system boots
- Insert the SD card or USB stick with the license file into the Race-Keeper system
 - Note: The Transfer LED will illuminate momentarily when the Race-Keeper system copies the license file from the SD card or USB stick

5. Use Race-Keeper Comparo to Configure Your System to Capture Dual Stream

- Open Race-Keeper Comparo and select Configure → Configure Race-Keeper
- Select two (or 3 or 4) cameras and then select the Dual Stream (highlighted in blue)



- Click on Save, insert an SD card (or USB stick if you have a Race-Keeper SE system) to copy the configuration to SD or USB

6. Update Your Race-Keeper System Configuration

- Power on your Race-Keeper video data system and wait until the system boots
- Insert the SD card or USB stick with the updated configuration into the Race-Keeper system
 - Note: The Transfer LED will illuminate momentarily when the Race-Keeper system copies the configuration file from the SD card or USB stick



Race-Keeper Comparo Dual Stream Playback

After you configure your system to capture dual stream, you'll notice a difference when you open Race-Keeper Comparo – your first two camera streams will be presented side-by-side.



If you are using more than two cameras, your second and third videos will be displayed according to your configuration (example below shows four cameras).

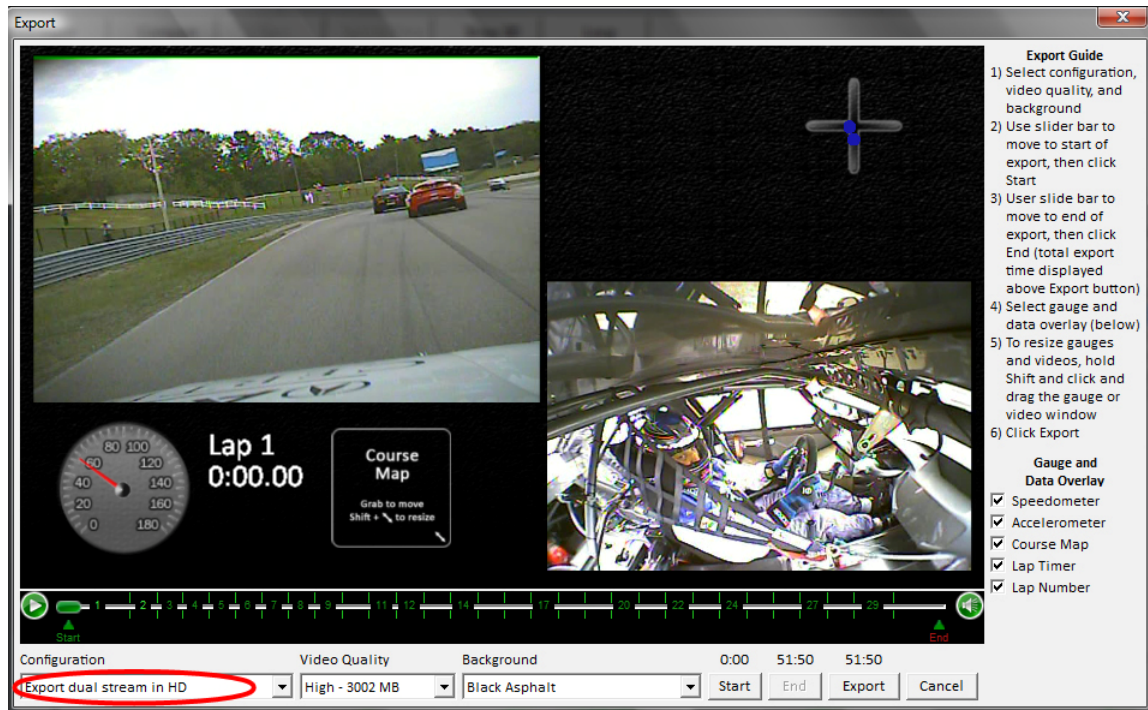


Race-Keeper HD Export

HD export gives you the power to export your video and animated data (gauges, track map, custom graphics) to an HD export file that you can play directly on your HD display. With HD export, you can place animated gauges and graphics on the background instead of directly on top of the videos.

HD Export

- Select File → Export
- Select Export dual stream in HD from the Configuration menu
- Follow directions in the Export Guide (top right) or see more information below



- Select video quality and background texture
 - *Note: With dual stream video capture, file sizes generally are 2x standard video capture*
- Select a segment of video to Export
 - Drag the slider bar to the planned start position and click the Start button, and then drag the slider to the planned stop position and click the End button, OR
 - Drag the start and end markers (green triangles) on the outing timeline to the required positions
 - *Use arrow keys on keyboard to advance or go backwards frame by frame*
 - *As you slide the start and end markers, total export time is displayed above the Export button*
- To DISPLAY – Click gauge and data check boxes to turn gauge(s) and data on/off
- To REPOSITION – Grab video windows and gauges/text and move to desired location
- To RESIZE – Hold Shift button, click on video window and/or gauges/text, and drag bottom right-hand corner
 - *Video windows can only be moved and resized when using HD Export*
- Click export button to export video
 - *Select file location and enter name for the export file*
 - *Use .mpg file extension for export to MPEG*



Advanced Export – Custom Backgrounds

Race-Keeper Comparo includes 18 built-in backgrounds.

To create your own custom background:

- Use an image editor (e.g., Photoshop) to create an image with 1920x1080 dimensions
- Save the file in .png format.
- Copy the file to the Race-Keeper backgrounds folder
 - **Windows XP** – C:\Program Files\Trivinci\Race-Keeper Comparo\backgrounds
 - **Windows Vista** – C:\Program Files (x86)\Trivinci\Race-Keeper Comparo\backgrounds
 - **Windows 7** – C:\Program Files (x86)\Trivinci\Race-Keeper Comparo\backgrounds
- Restart Race-Keeper Comparo and select your custom background from the Background menu

Trouble-shooting – Pixelation

If your export file pixelates, your PC likely does not have appropriate processing power or current video codecs installed; consider updating your video codecs (see your PC's user manual or vendor web site) or use one of the basic (i.e., non-patterned) pre-built backgrounds.