



## Using Race-Keeper to Analyze Traqmate Files Side-by-Side with Race-Keeper Track Sessions

Race-Keeper Comparo provides capability to compare Race-Keeper and Traqmate sessions side-by-side. Race-Keeper Comparo opens Traqmate .csv files, which can be displayed and manipulated similarly to a Race-Keeper track session, including data graph, course map display, and splits reports.

*Note: Traqmate and TraqView are copyrighted properties of Track Systems Technologies, LLC.*

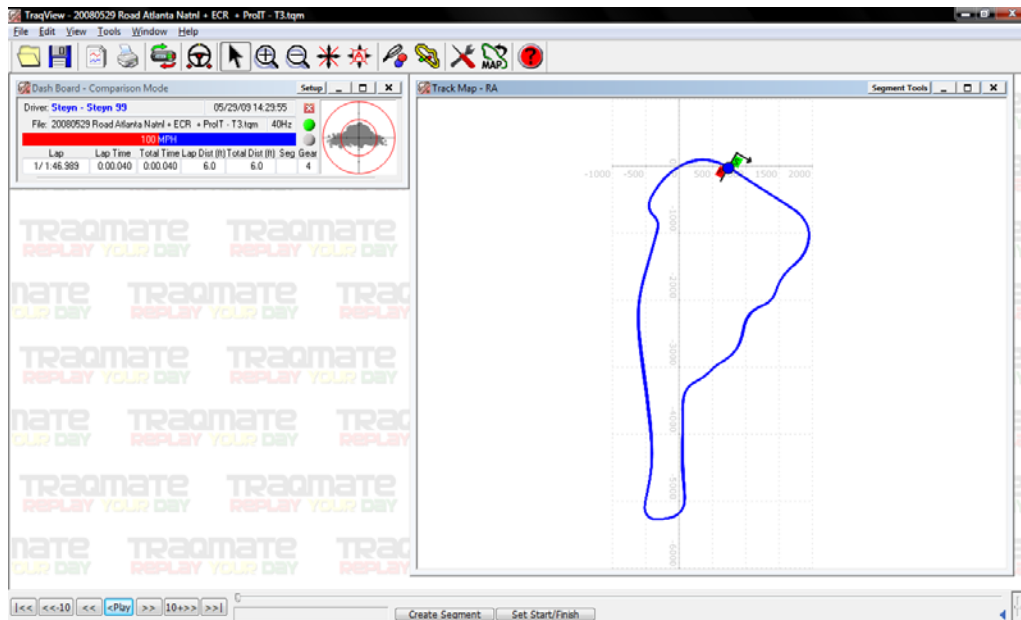
### Quick-start Summary

- Open and export Traqmate track session(s) to .csv
- Place each exported .csv in its own separate folder
- Launch Race-Keeper Comparo, go to Open, and navigate to folder(s) containing the .csv file(s)
- Scan folder(s) and Traqmate data file(s) become available in Open Outing window
- Open Traqmate track session (identified as “Data Only” track sessions)

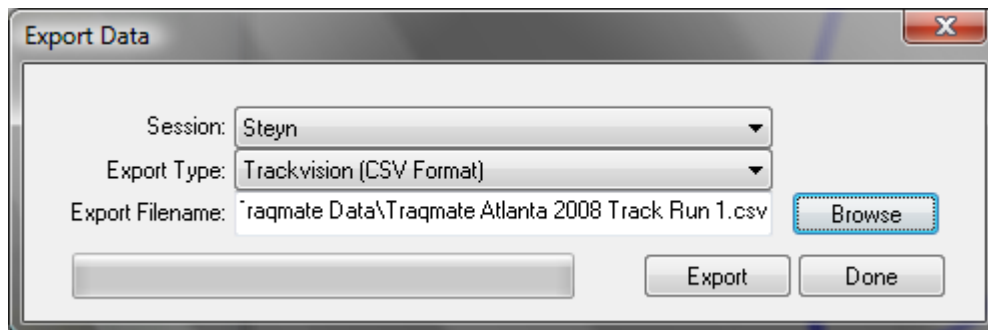
### Detailed Instructions

#### Open and Export Traqmate Track Session

- Open Traqmate track session



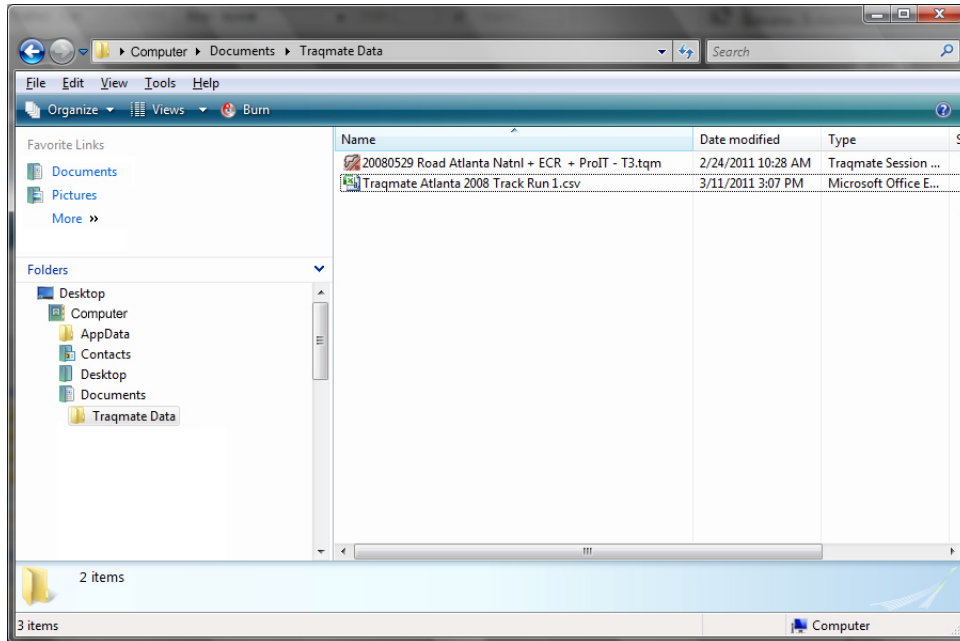
- Select File -> Export Data



- Enter Export Filename and click on Browse to navigate to a target export folder
- Click on Export (and wait for a short period of time) and then Click on Done



- Confirm that Traqmate software properly created .csv file in target folder



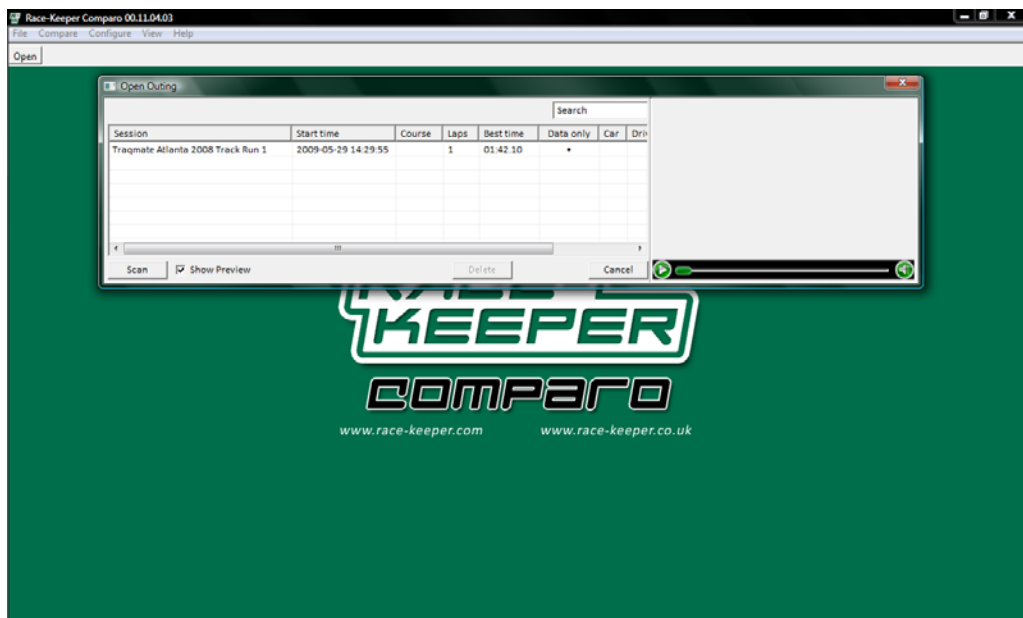
### Important

Each Traqmate file must reside in its own named folder.

Race-Keeper Comparo will not Scan or Open multiple Traqmate files that are located in the same folder.

### Launch Race-Keeper Comparo and Open Traqmate File(s)

- Launch Race-Keeper Comparo and select File -> Open (shortcut key = O)
- Click on Scan (bottom-left) and navigate to target folder(s) with Traqmate
- Traqmate file will appear in the Race-Keeper Comparo Open Outing window



- To open, double-click on Traqmate file

See [Race-Keeper System User Guide](#) for more information on how to use Race-Keeper Comparo.